

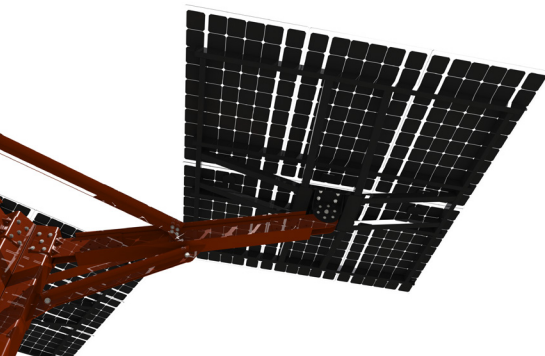
Trestle

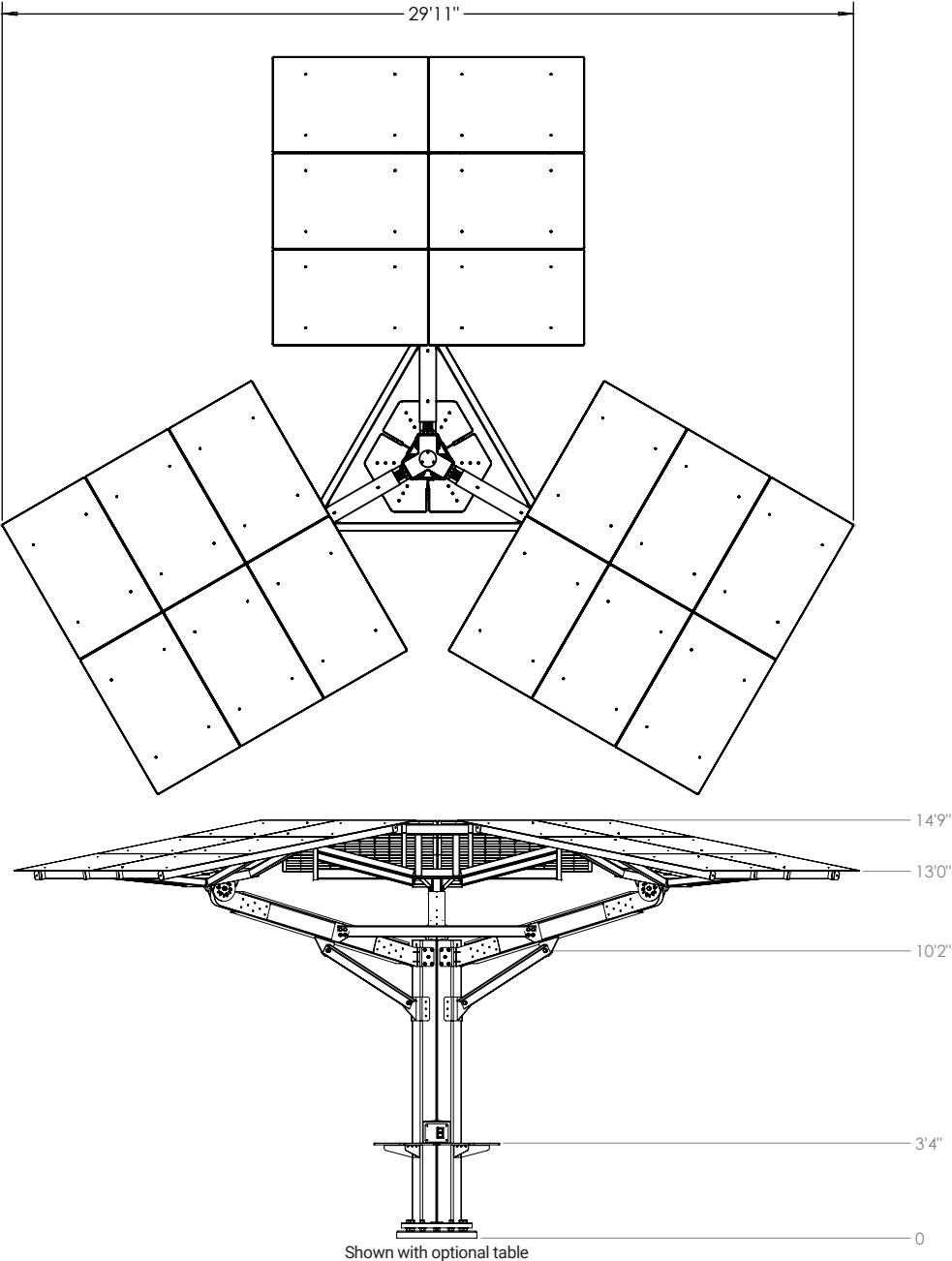
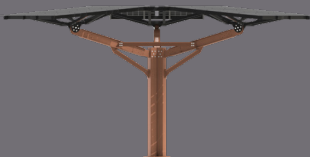


A Strong Stance for Solar

Trestle by Spotlight Solar makes a solar statement. As a complement to your green building or energy efficiency investments, Trestle lets visitors know you're a clean energy advocate. And its 18 great looking solar panels provide a shady spot for people to think about their own choices.

Trestle's strong, deliberate aesthetic recalls heavy industry and railroads. It's at home in architectural settings of adaptive reuse and -warehouse districts. Trestle's 30' wide scale provides a sense of place, making it ideal for courtyards and seating areas. And it produces enough energy to power electric vehicles over 20,000 miles per year.





Optional table and sign

Specifications	
Warranty	10 year limited warranty
Maximum height (top of array at maximum angle)	14' 9"
Total weight	4,600 lbs. (ships in pieces)
Wind load rating	120 MPH
Material	Recycled steel
Finish	High performance coating, client's color choice
Solar panel requirement	Lumos LSX frame-less
Provided by Spotlight Solar: mounting structure, assembly hardware, installation and orientation guidelines	
Provided by solar integrator: solar modules, wiring, foundation, electrical design, installation, permitting, site-specific engineering	
Configuration	Product Number
3-arm (18 panels)	TSL-103183
Accessories	Product Number
Standing height table with power outlets	TSL-160000
Accent lights on arms	TSL-110000
Sign	TSL-170000

Updated 9.17.2019

Spotlight Solar is up to something good.



Spotlight Solar is dedicated to making solar energy visible and attractive. We don't replace rooftop systems; we complement them. Our ambition is to promote the adoption of solar energy by making it more visible and engaging.